

# APARTMENT FLOOR PLAN



**A D E H I N O T**

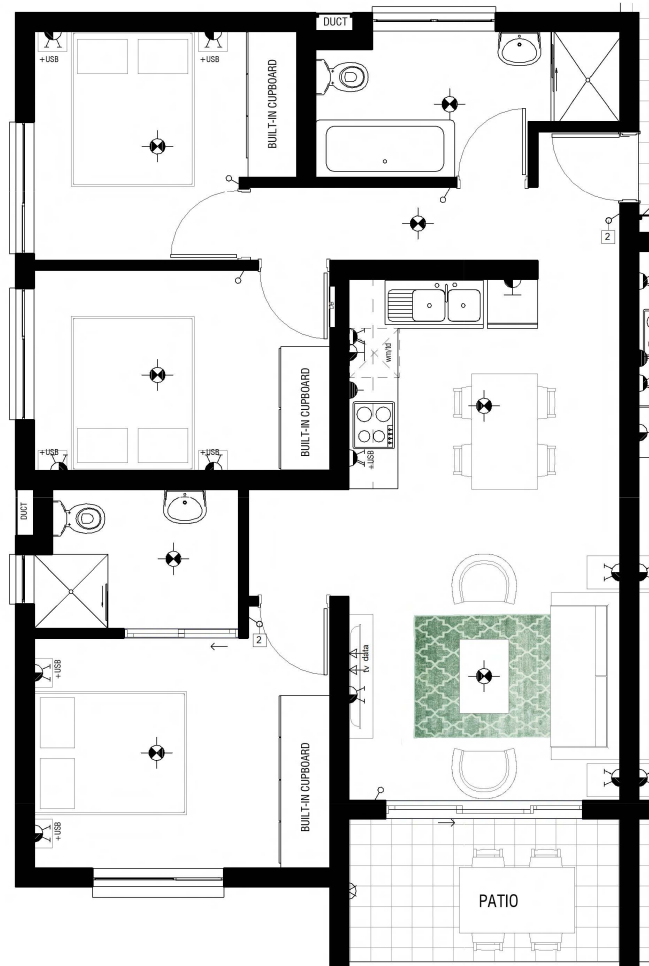
**TYPE A4- Ground, First, Second and Third Floor**

**2 Bedroom 2 Bathroom**

Apartment Area	59.67m <sup>2</sup>
Covered Patio / Balcony	5.74m <sup>2</sup>
<b>TOTAL AREA</b>	<b>65.41m<sup>2</sup></b>

*Balwin*  
PROPERTIES

# APARTMENT FLOOR PLAN

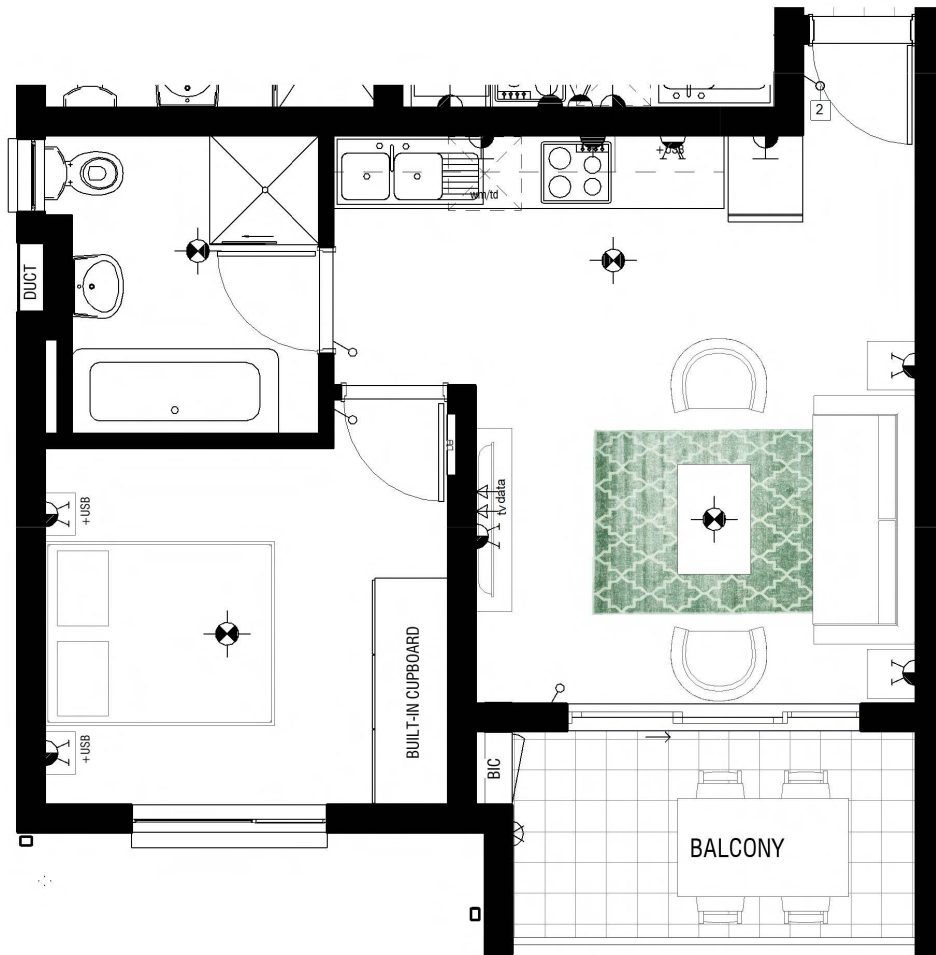


## Type A4- Ground and First Floor

### 3 BEDROOM 2 BATHROOM

Apartment Area	75.74m <sup>2</sup>
Covered Patio / Balcony	6.14m <sup>2</sup>
<b>TOTAL AREA</b>	<b>81.88m<sup>2</sup></b>

# APARTMENT FLOOR PLAN

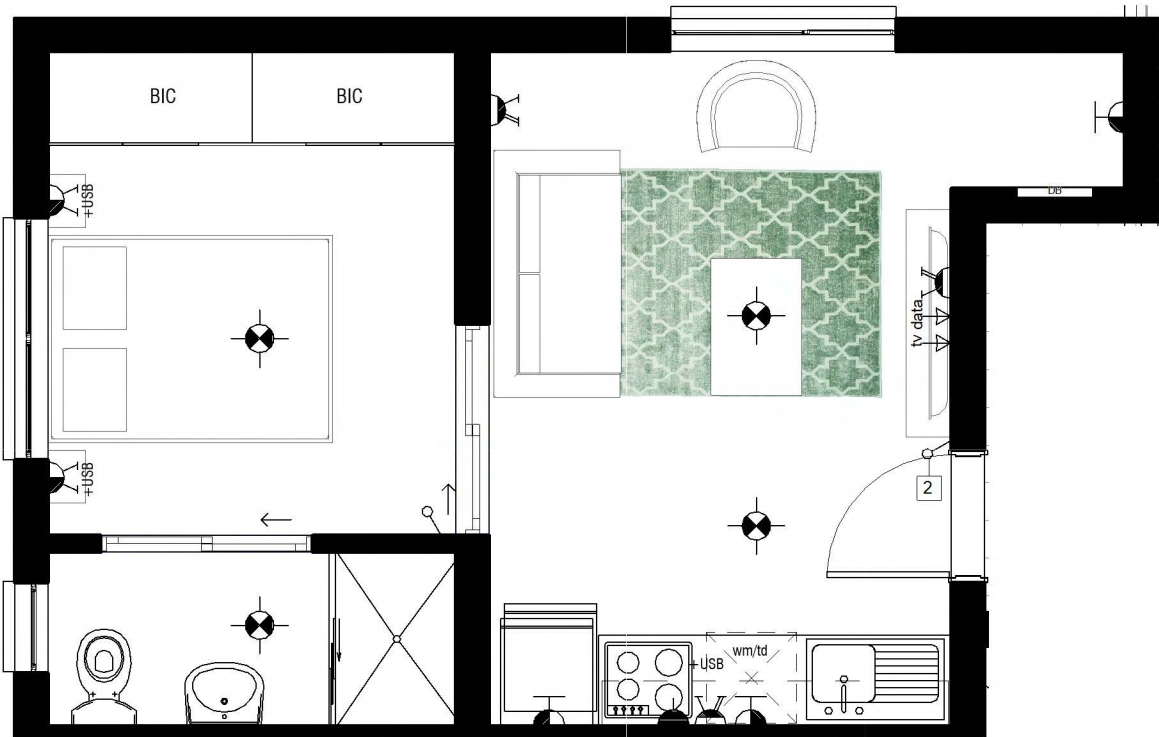


## TYPE A4 - Second and Third Floor

### 1 Bedroom 1 Bathroom

Apartment Area Covered	40.76m <sup>2</sup>
Patio / Balcony	6.38m <sup>2</sup>
<b>TOTAL AREA</b>	<b>47.15m<sup>2</sup></b>

# APARTMENT FLOOR PLAN



## TYPE A4 - Second and Third Floor

### 1 Bedroom 1 Bathroom LIFESTYLE

Apartment Area	32.17m <sup>2</sup>
<b>TOTAL AREA</b>	<b>32.17m<sup>2</sup></b>

