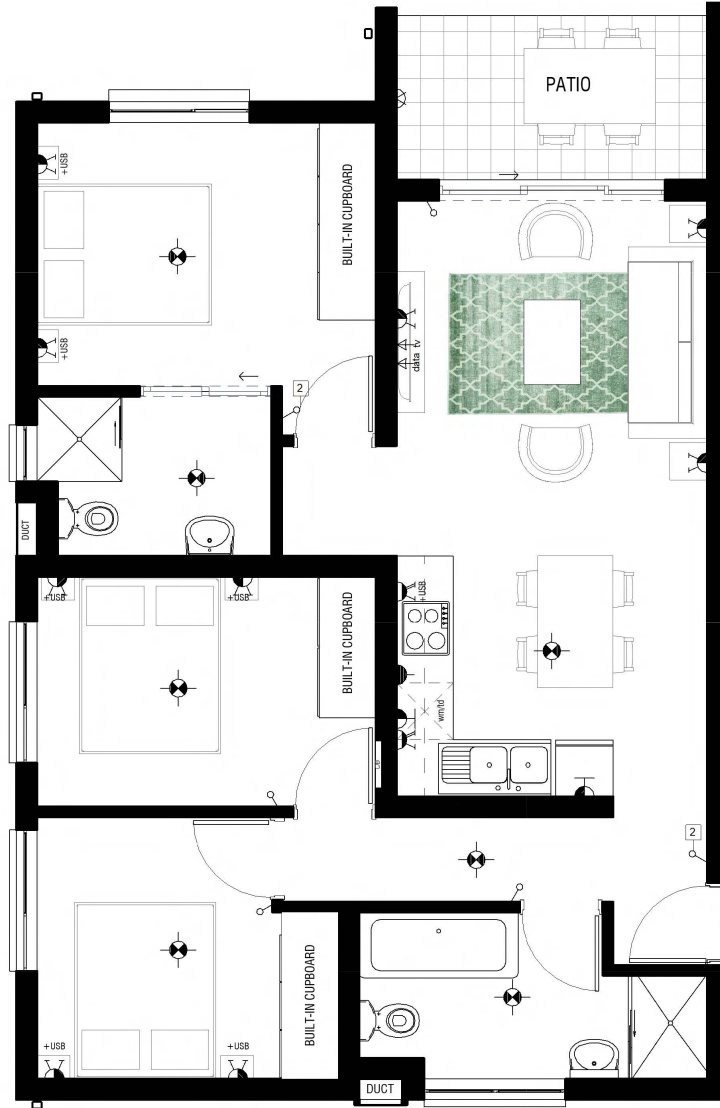


APARTMENT FLOOR PLAN



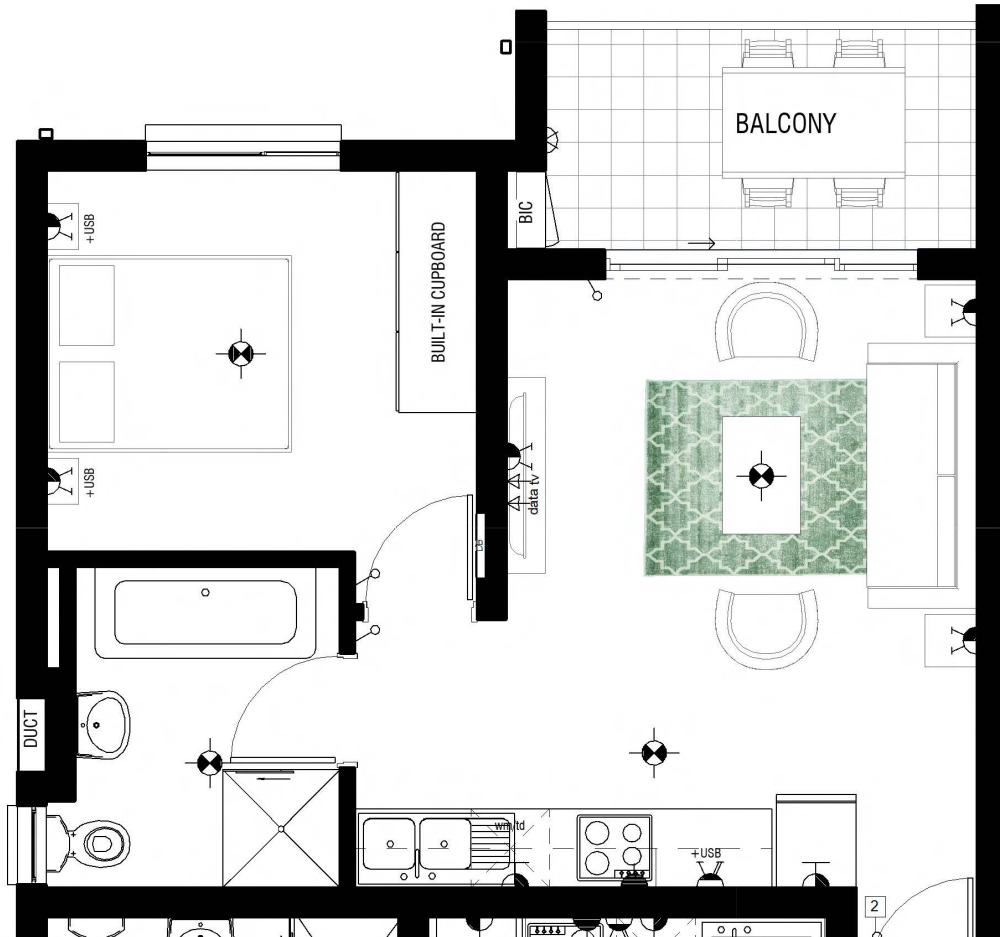
TYPE B4 - Ground and First Floor

3 Bedroom 2 Bathroom

Apartment Area Covered	75.64m ²
Patio / Balcony	6.13m ²
TOTAL AREA	81.78m²



APARTMENT FLOOR PLAN



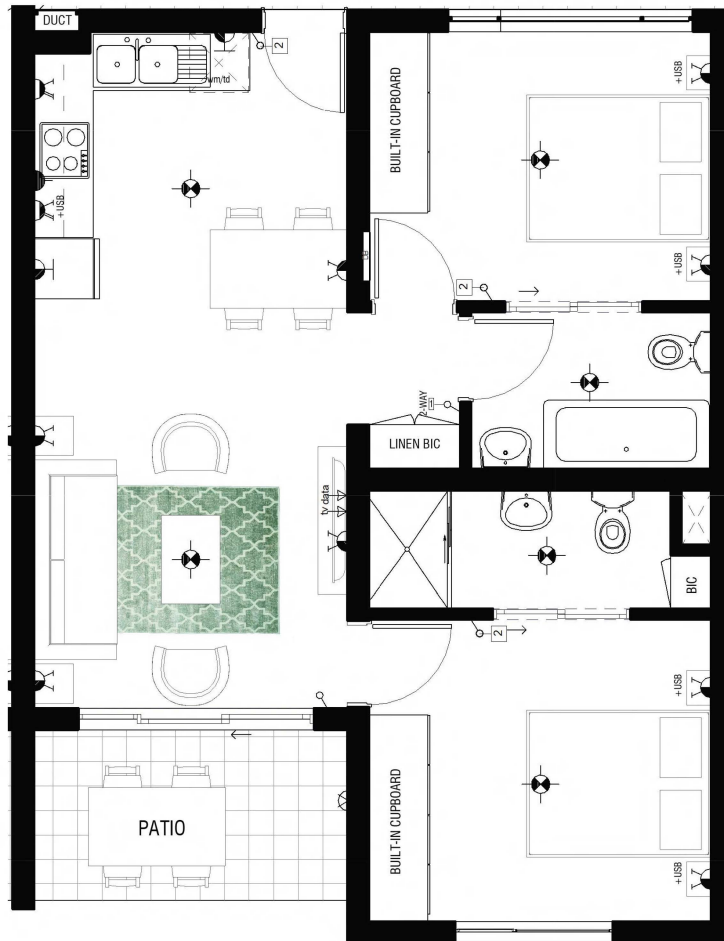
TYPE B4 - Second and Third Floor

1 Bedroom 1 Bathroom

Apartment Area Covered	40.84m ²
Patio / Balcony	6.33m ²
TOTAL AREA	47.17m²



APARTMENT FLOOR PLAN



A D E H I N O T

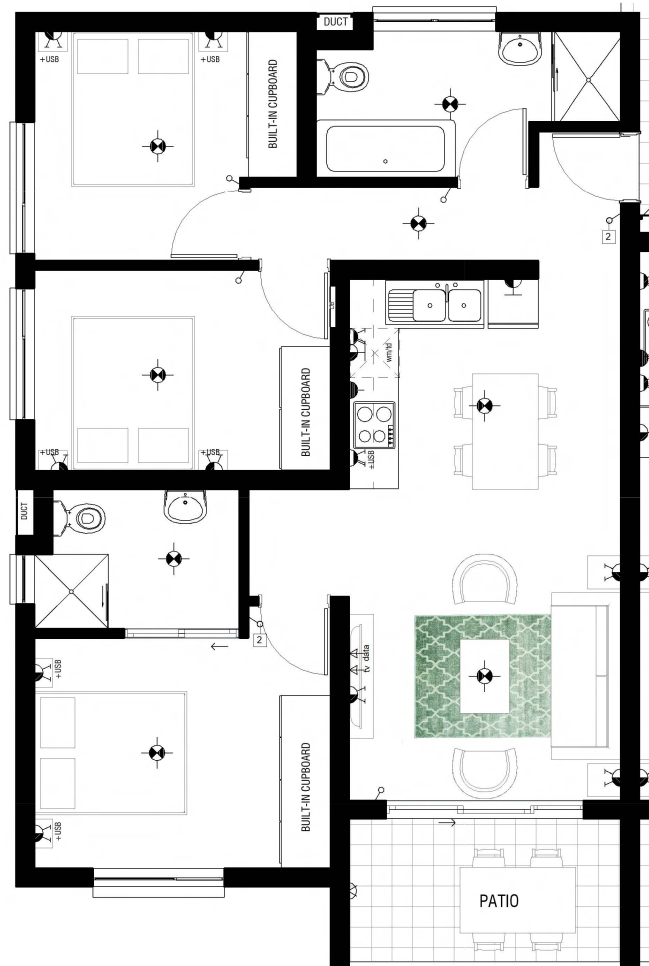
TYPE A4- Ground, First, Second and Third Floor

2 Bedroom 2 Bathroom

Apartment Area	59.67m ²
Covered Patio / Balcony	5.74m ²
TOTAL AREA	65.41m²



APARTMENT FLOOR PLAN



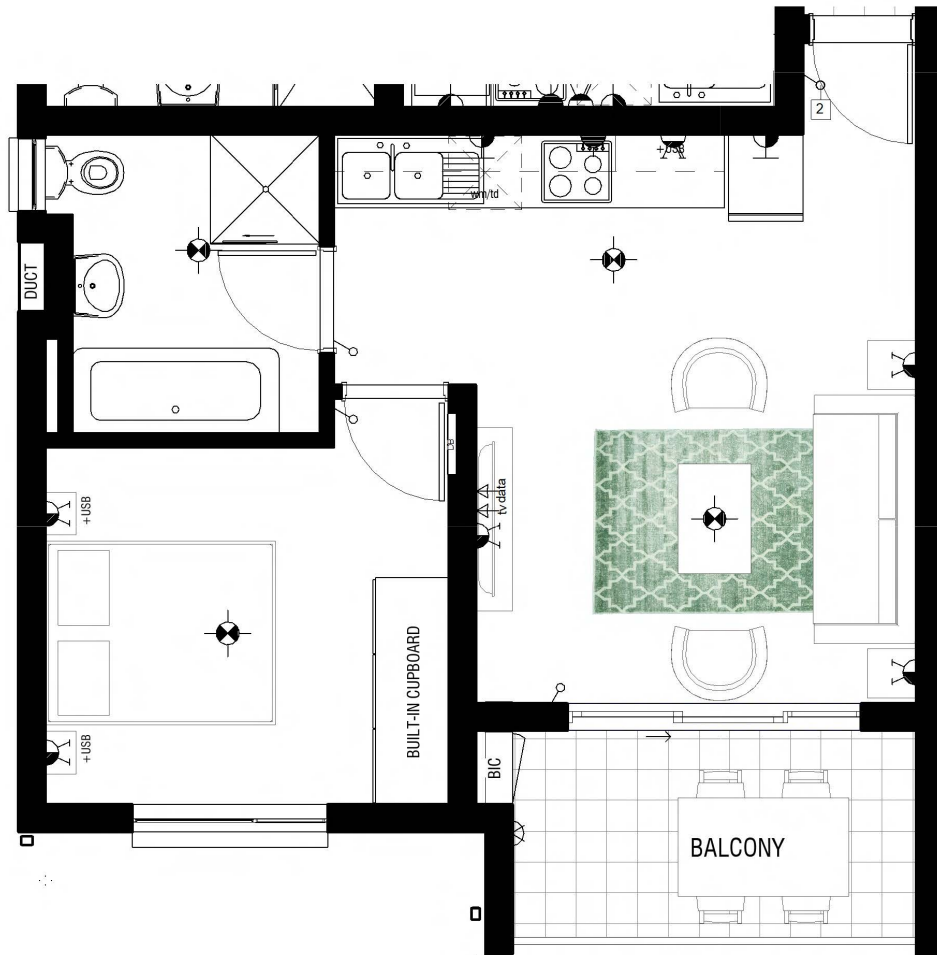
Type A4- Ground and First Floor

3 BEDROOM 2 BATHROOM

Apartment Area	75.74m ²
Covered Patio / Balcony	6.14m ²
TOTAL AREA	81.88m²



APARTMENT FLOOR PLAN



TYPE A4 - Second and Third Floor

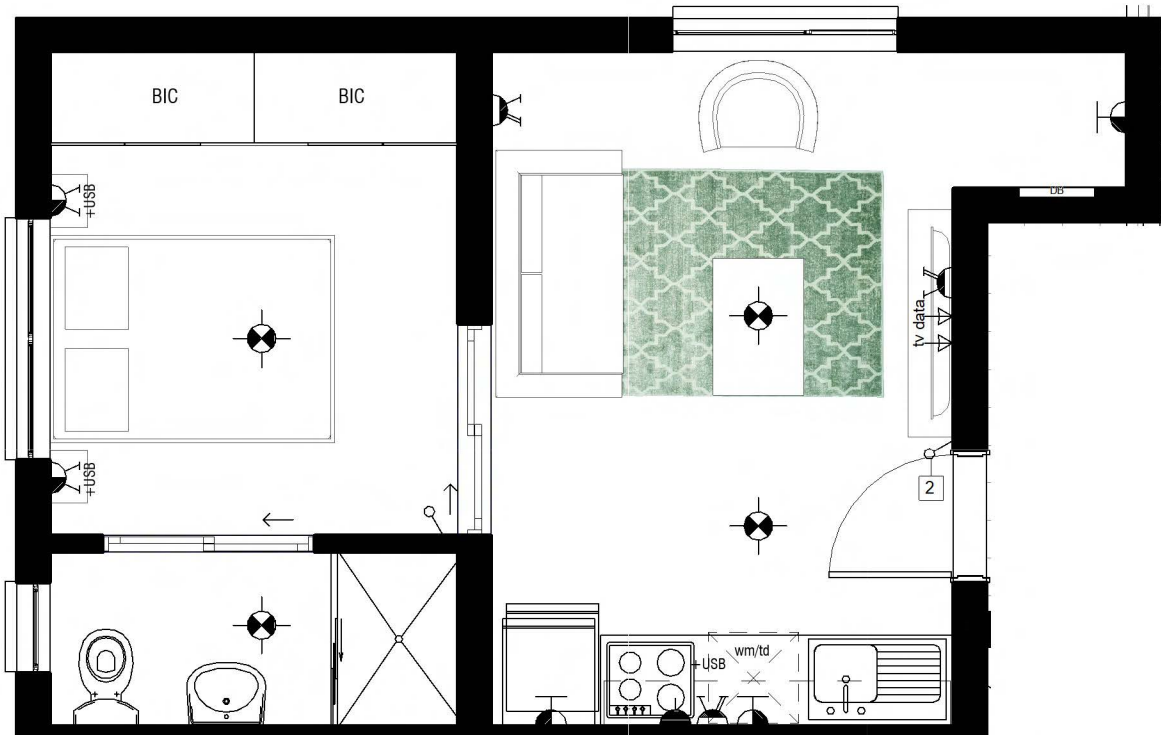
1 Bedroom 1 Bathroom

Apartment Area Covered	40.76m ²
Patio / Balcony	6.38m ²
TOTAL AREA	47.15m²





APARTMENT FLOOR PLAN



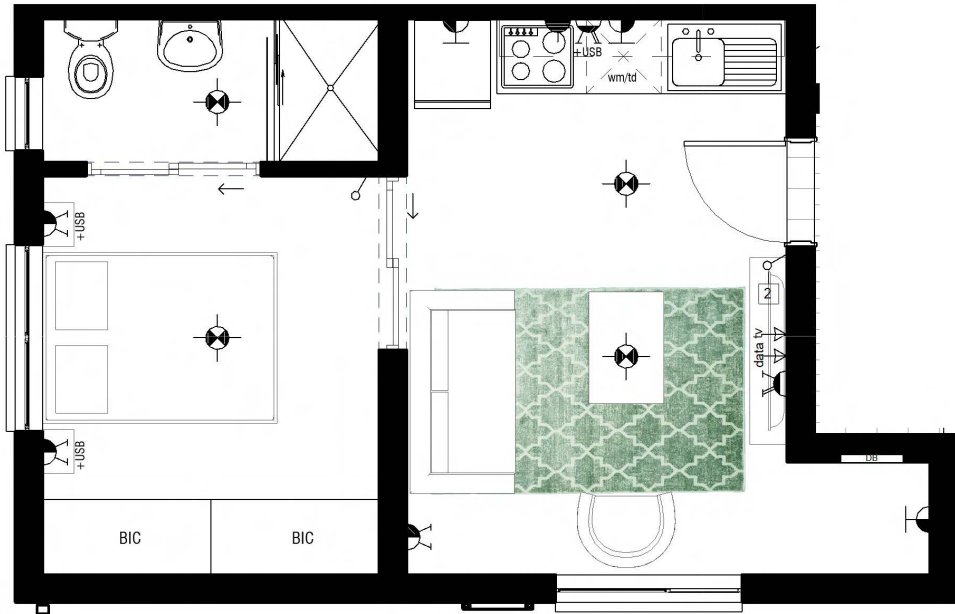
TYPE A4 - Second and Third Floor

1 Bedroom 1 Bathroom LIFESTYLE

Apartment Area	32.17m ²
TOTAL AREA	32.17m²



APARTMENT FLOOR PLAN



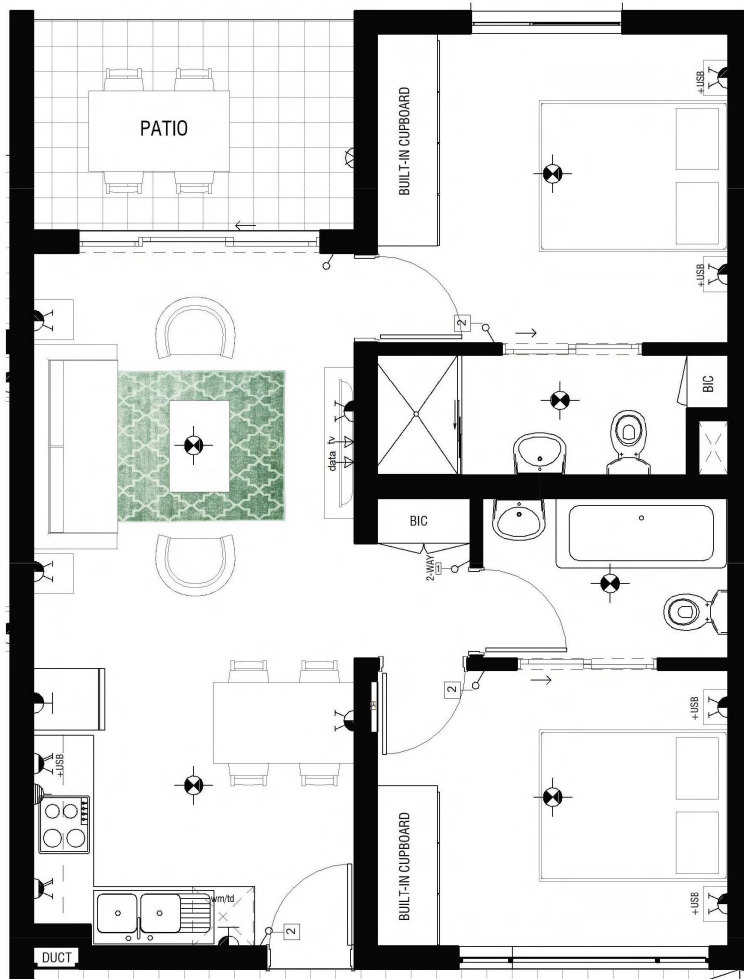
TYPE B4 - Second and Third Floor

1 Bedroom 1 Bathroom LIFESTYLE

Apartment Area	32.17m ²
TOTAL AREA	32.17m²



APARTMENT FLOOR PLAN



TYPE B4 - Ground, First, Second and Third Floor

2 Bedroom 2 Bathroom

Apartment Area Covered	59.67m ²
Patio / Balcony	7.04m ²
TOTAL AREA	66.71m²

