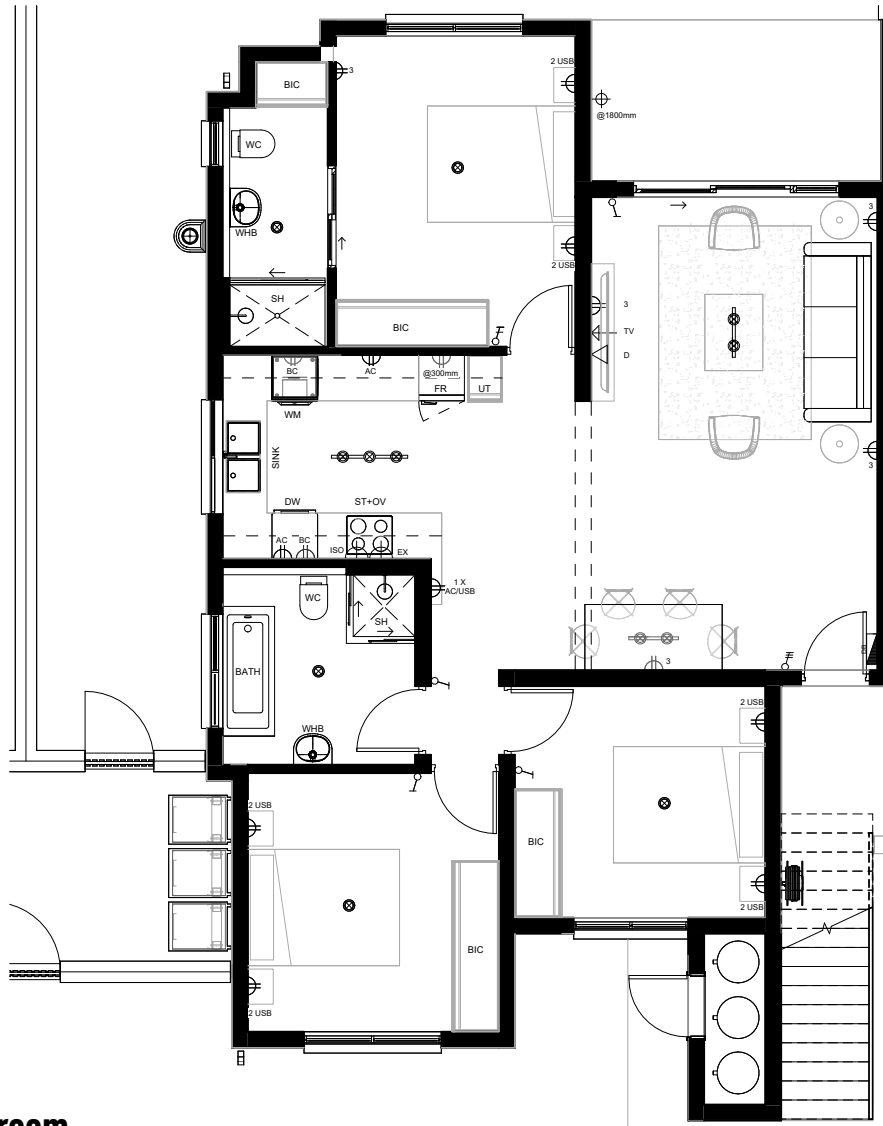


# APARTMENT FLOOR PLAN



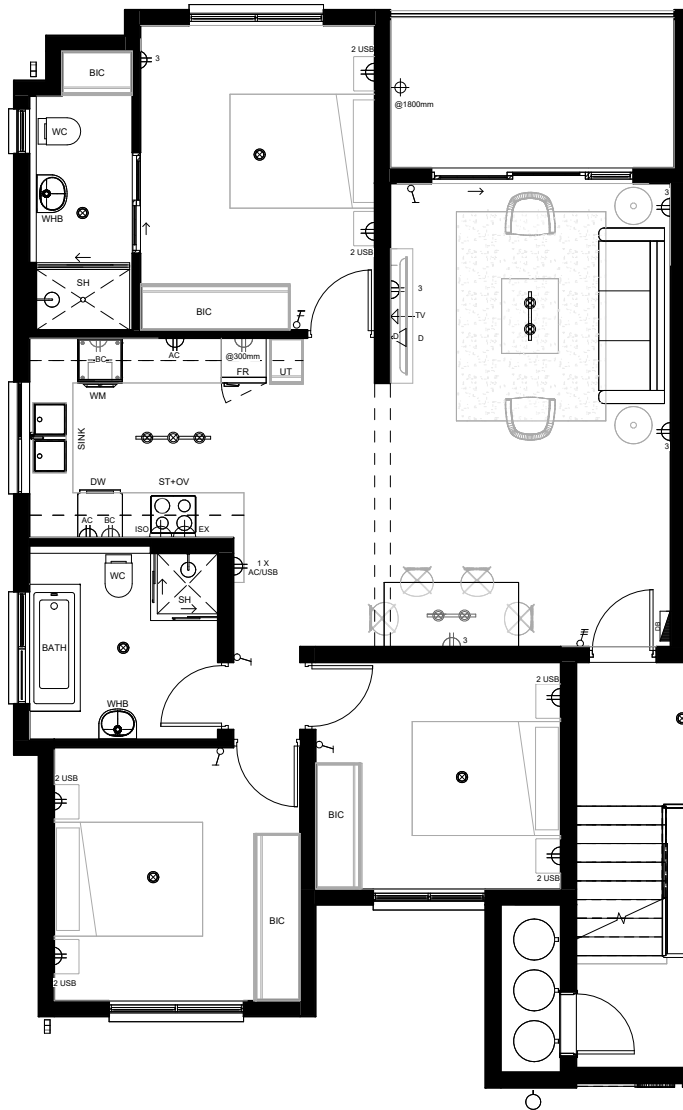
## 3 Bedroom 2 Bathroom

### Type G - Ground Floor

Apartment Area	99.00m <sup>2</sup>
Balcony Area	8.00m <sup>2</sup>
<b>TOTAL AREA</b>	<b>107.00m<sup>2</sup></b>

Rev K

# APARTMENT FLOOR PLAN

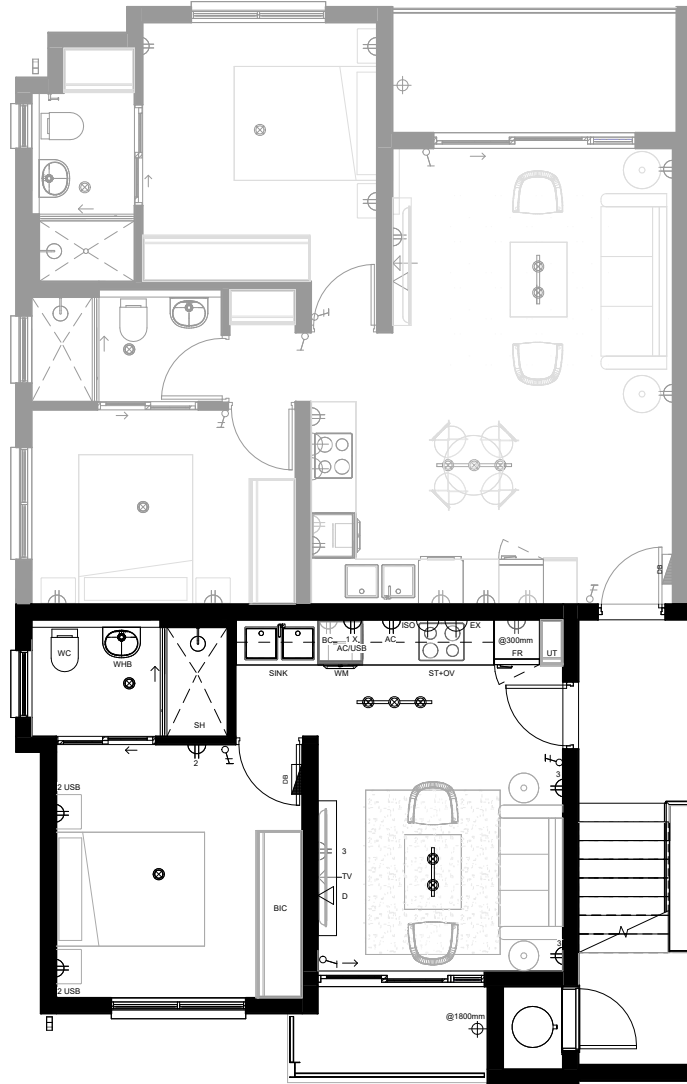


**3 Bedroom 2 Bathroom**  
**Type G -First Floor**

Apartment Area	99.00m <sup>2</sup>
Balcony Area	8.00m <sup>2</sup>
<b>TOTAL AREA</b>	<b>107.00m<sup>2</sup></b>

Rev K

# APARTMENT FLOOR PLAN



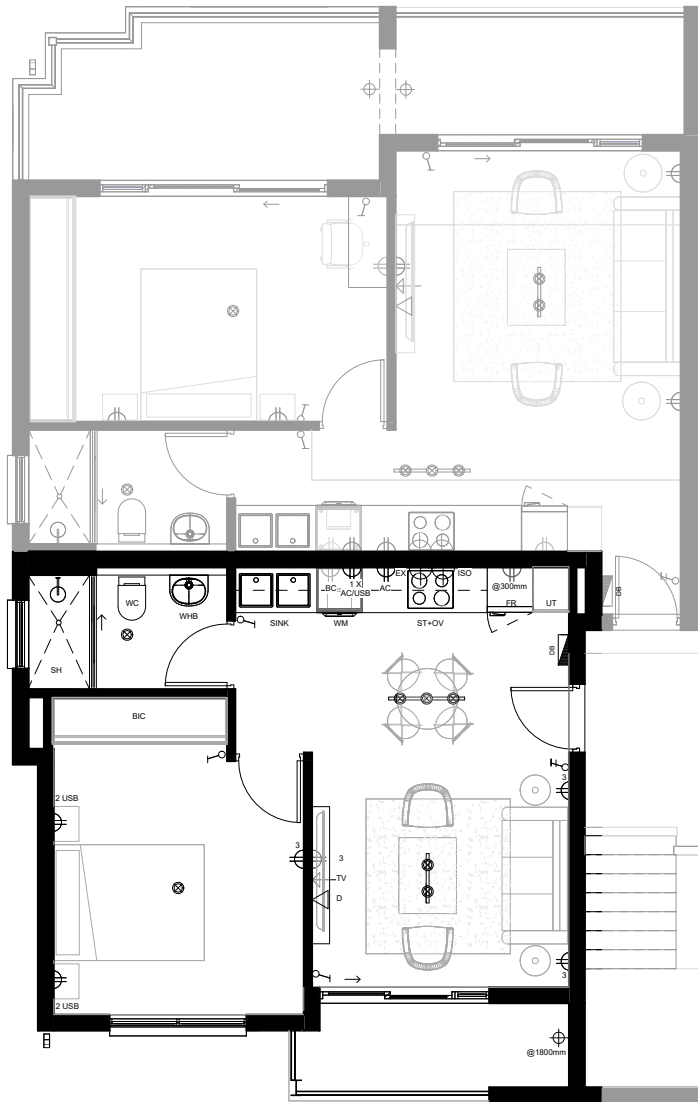
## 1 Bedroom 1 Bathroom Type G - Second Floor

Apartment Area	38.00m <sup>2</sup>
Balcony Area	3.00m <sup>2</sup>
<b>TOTAL AREA</b>	<b>41.00m<sup>2</sup></b>

Rev K



# APARTMENT FLOOR PLAN

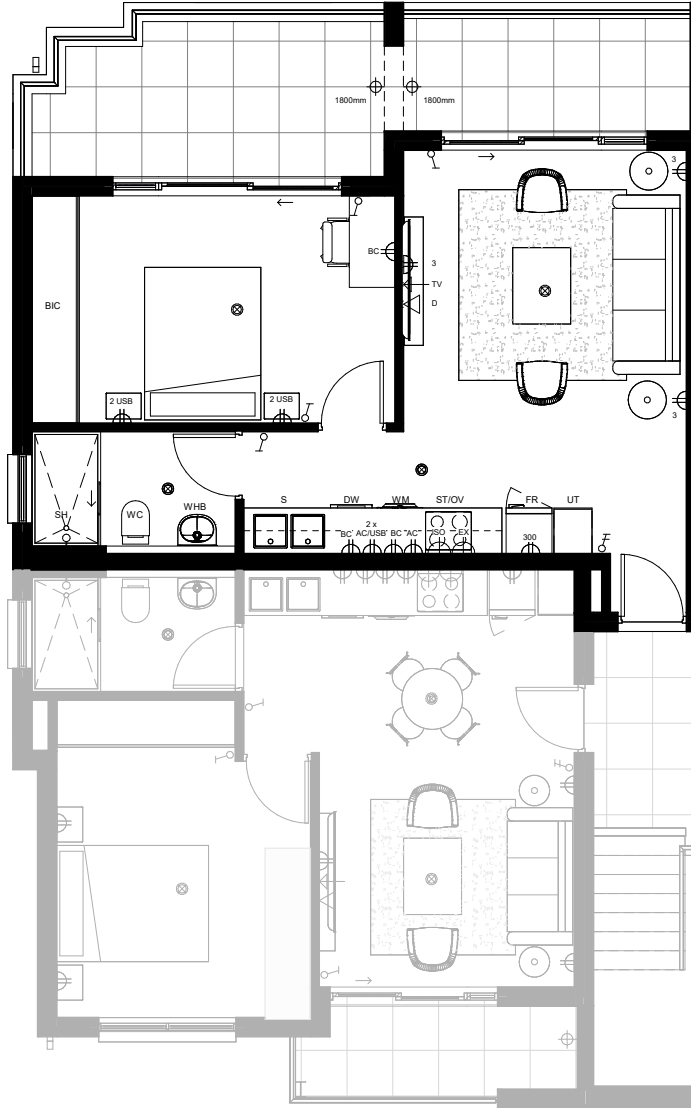


**1 Bedroom 1 Bathroom**  
**Type G - Third Floor**

Apartment Area	44.00m <sup>2</sup>
Balcony Area	5.00m <sup>2</sup>
<b>TOTAL AREA</b>	<b>49.00m<sup>2</sup></b>

Rev K

# APARTMENT FLOOR PLAN



**BB**

**1 Bedroom 1 Bathroom**  
**Type G - Third Floor**

Apartment Area	48.00m <sup>2</sup>
Balcony Area	17.00m <sup>2</sup>
<b>TOTAL AREA</b>	<b>65.00m<sup>2</sup></b>

Rev K