

# APARTMENT TYPE H (PHASE 16+)

**NEW**

GROUND FLOOR



**3 BEDROOM 2 BATHROOM**

**TYPE H**

REV Q

|                   |                            |
|-------------------|----------------------------|
| Apartment Area    | 96.00m <sup>2</sup>        |
| Covered Patio     | 10.00m <sup>2</sup>        |
| <b>Total Area</b> | <b>106.00m<sup>2</sup></b> |

# APARTMENT TYPE N (PHASE 16+)

**NEW**

## THIRD FLOOR PENTHOUSE



**3 BEDROOM 2 BATHROOM**

**TYPE N**

REV Q

|                   |                            |
|-------------------|----------------------------|
| Apartment Area    | 94.00m <sup>2</sup>        |
| Covered Balcony   | 13.00m <sup>2</sup>        |
| <b>Total Area</b> | <b>107.00m<sup>2</sup></b> |

# APARTMENT TYPE P (PHASE 16+)

**NEW**

FIRST FLOOR



**2 BEDROOM 2 BATHROOM**

**TYPE P**

|                   |                           |
|-------------------|---------------------------|
| Apartment Area    | 65.00m <sup>2</sup>       |
| Covered Balcony   | 7.00m <sup>2</sup>        |
| <b>Total Area</b> | <b>72.00m<sup>2</sup></b> |

REV Q

# APARTMENT TYPE P (PHASE 16+)

**NEW**

SECOND FLOOR



**2 BEDROOM 2 BATHROOM**

**TYPE P**

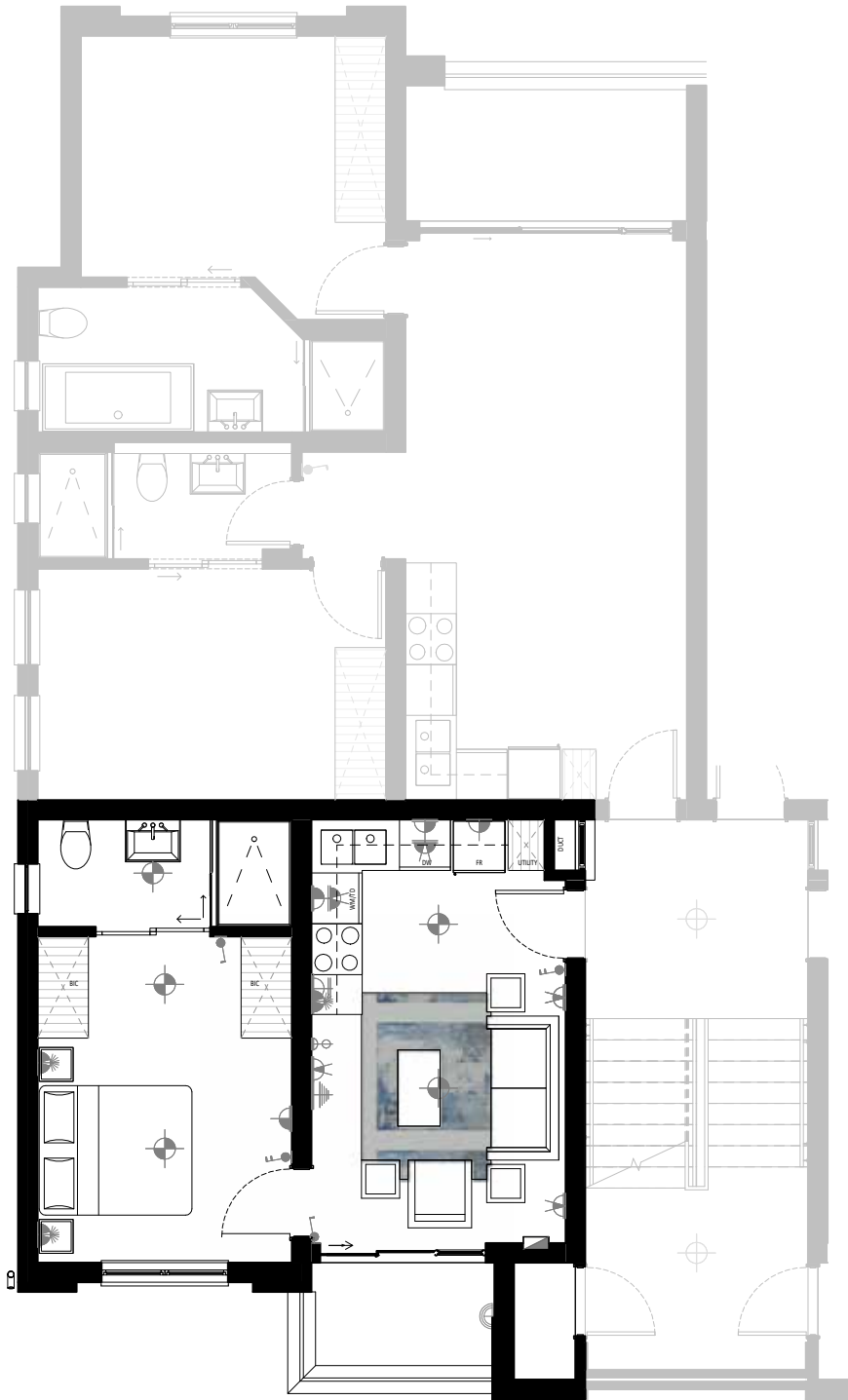
REV Q

|                   |                           |
|-------------------|---------------------------|
| Apartment Area    | 65.00m <sup>2</sup>       |
| Covered Balcony   | 7.00m <sup>2</sup>        |
| <b>Total Area</b> | <b>72.00m<sup>2</sup></b> |

# APARTMENT TYPE Q (PHASE 16+)

**NEW**

**FIRST FLOOR**



**1 BEDROOM 1 BATHROOM**

**TYPE Q**

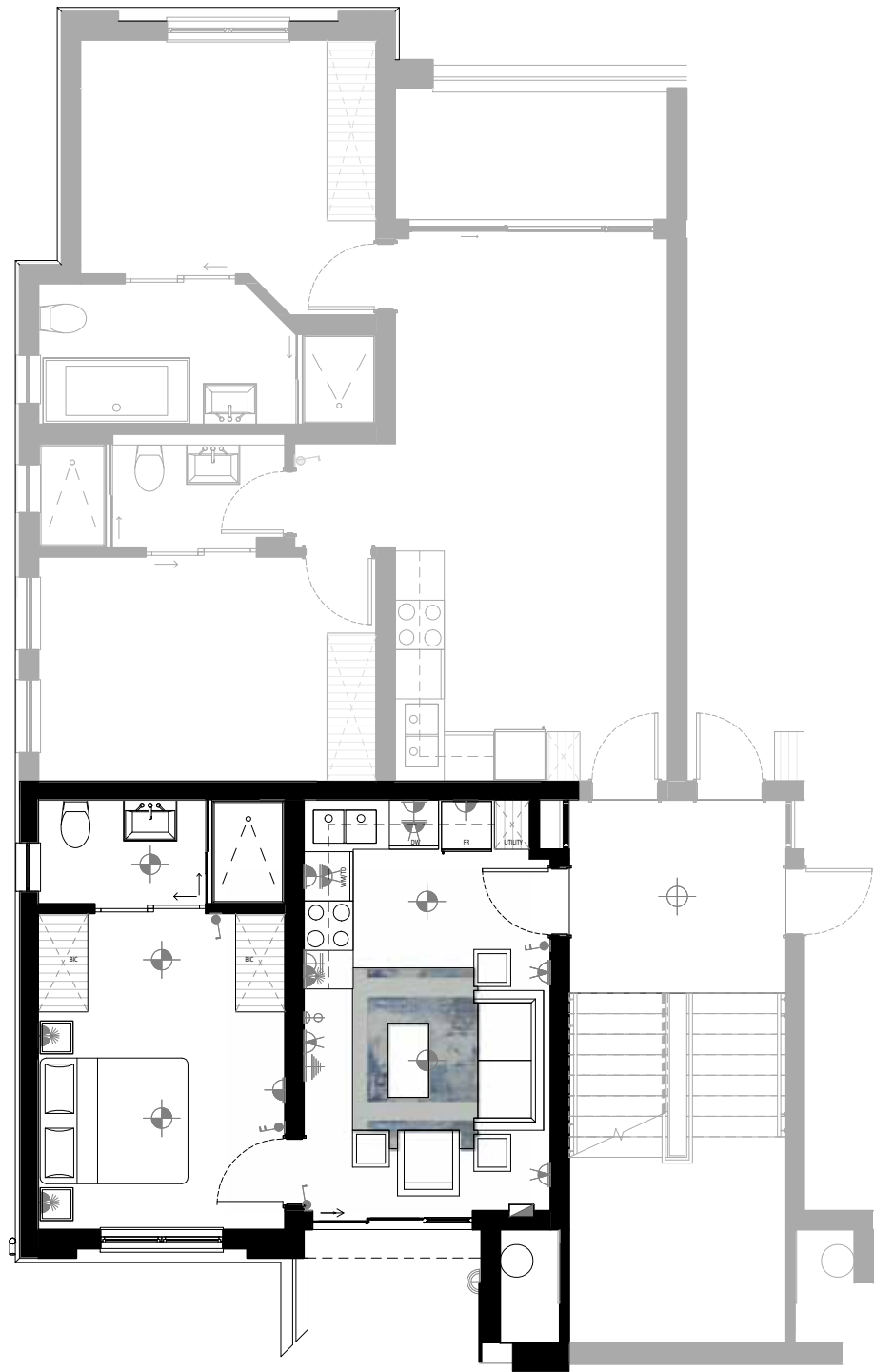
REV Q

|                   |                           |
|-------------------|---------------------------|
| Apartment Area    | 36.00m <sup>2</sup>       |
| Covered Balcony   | 4.00m <sup>2</sup>        |
| <b>Total Area</b> | <b>40.00m<sup>2</sup></b> |

# APARTMENT TYPE Q (PHASE 16+)

**NEW**

SECOND FLOOR



**1 BEDROOM 1 BATHROOM**

**TYPE Q**

REV Q

|                   |                           |
|-------------------|---------------------------|
| Apartment Area    | 36.00m <sup>2</sup>       |
| Covered Balcony   | 4.00m <sup>2</sup>        |
| <b>Total Area</b> | <b>40.00m<sup>2</sup></b> |

# APARTMENT TYPE H (PHASE 17)

**NEW**

GROUND FLOOR



**3 BEDROOM 2 BATHROOM**

**TYPE H**

REV B

|                   |                             |
|-------------------|-----------------------------|
| Apartment Area    | 96.00m <sup>2</sup>         |
| Covered Balcony   | 10.00m <sup>2</sup>         |
| <b>Total Area</b> | <b>106..00m<sup>2</sup></b> |

# APARTMENT TYPE V (PHASE 16+)

**NEW**

FIRST FLOOR



**3 BEDROOM 2 BATHROOM**  
**TYPE V**

|                   |                            |
|-------------------|----------------------------|
| Apartment Area    | 96.00m <sup>2</sup>        |
| Covered Balcony   | 10.00m <sup>2</sup>        |
| <b>Total Area</b> | <b>106.00m<sup>2</sup></b> |



# APARTMENT TYPE T (PHASE 17)

**NEW**

SECOND FLOOR



**2 BEDROOM 1 BATHROOM**

**TYPE T**

REV B

|                   |                           |
|-------------------|---------------------------|
| Apartment Area    | 56.00m <sup>2</sup>       |
| Covered Balcony   | 7.00m <sup>2</sup>        |
| <b>Total Area</b> | <b>63.00m<sup>2</sup></b> |

# APARTMENT TYPE U (PHASE 16+)

**NEW**

SECOND FLOOR



**2 BEDROOM 1 BATHROOM**  
**TYPE U**

|                   |                           |
|-------------------|---------------------------|
| Apartment Area    | 46.00m <sup>2</sup>       |
| Covered Balcony   | 4.00m <sup>2</sup>        |
| <b>Total Area</b> | <b>50.00m<sup>2</sup></b> |

# APARTMENT TYPE R (PHASE 17)

**NEW**

THIRD FLOOR



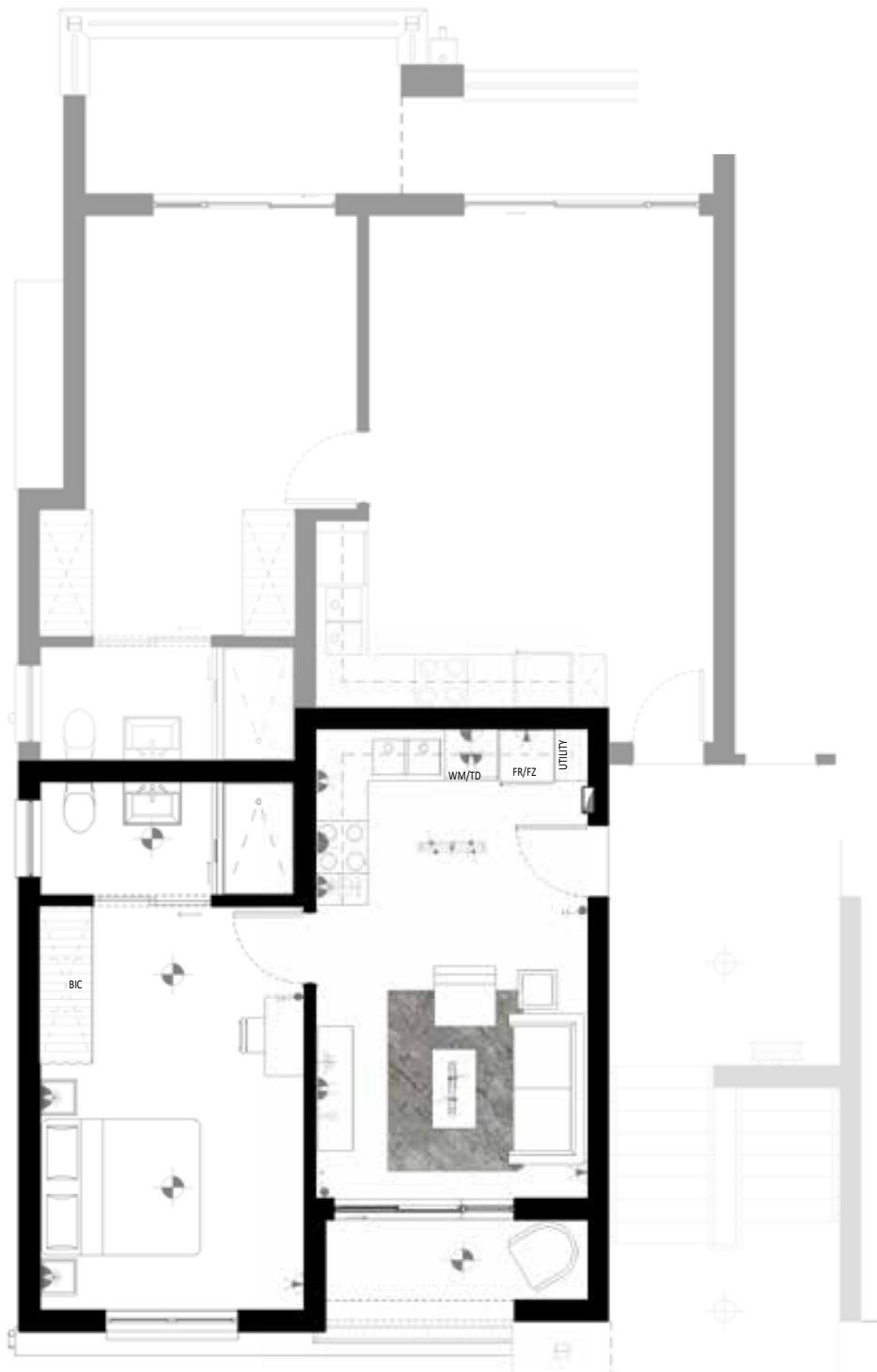
**1 BEDROOM 1 BATHROOM**  
**TYPE R**

|                   |                           |
|-------------------|---------------------------|
| Apartment Area    | 49.00m <sup>2</sup>       |
| Covered Patio     | 13.00m <sup>2</sup>       |
| <b>Total Area</b> | <b>62.00m<sup>2</sup></b> |

# APARTMENT TYPE S (PHASE 17)

**NEW**

THIRD FLOOR



**1 BEDROOM 1 BATHROOM**  
**TYPE S**

|                   |                           |
|-------------------|---------------------------|
| Apartment Area    | 40.00m <sup>2</sup>       |
| Covered Balcony   | 4.00m <sup>2</sup>        |
| <b>Total Area</b> | <b>44.00m<sup>2</sup></b> |