



PRETORIA EAST | GAUTENG | SOUTH AFRICA





LOCATION

Greencreek is a unique development in the Riverwalk Estate. Situated in the rapidly expanding suburbs East of Pretoria. This amazing development is the link bridge between Mamelodi and Silverlakes

Allowing you to enjoy almost every leisure available in the development and surrounding area which is close to Woodhill Country Estate, Silverlakes Golf Estate, Trail & Mountain Bike Parks and so much more.

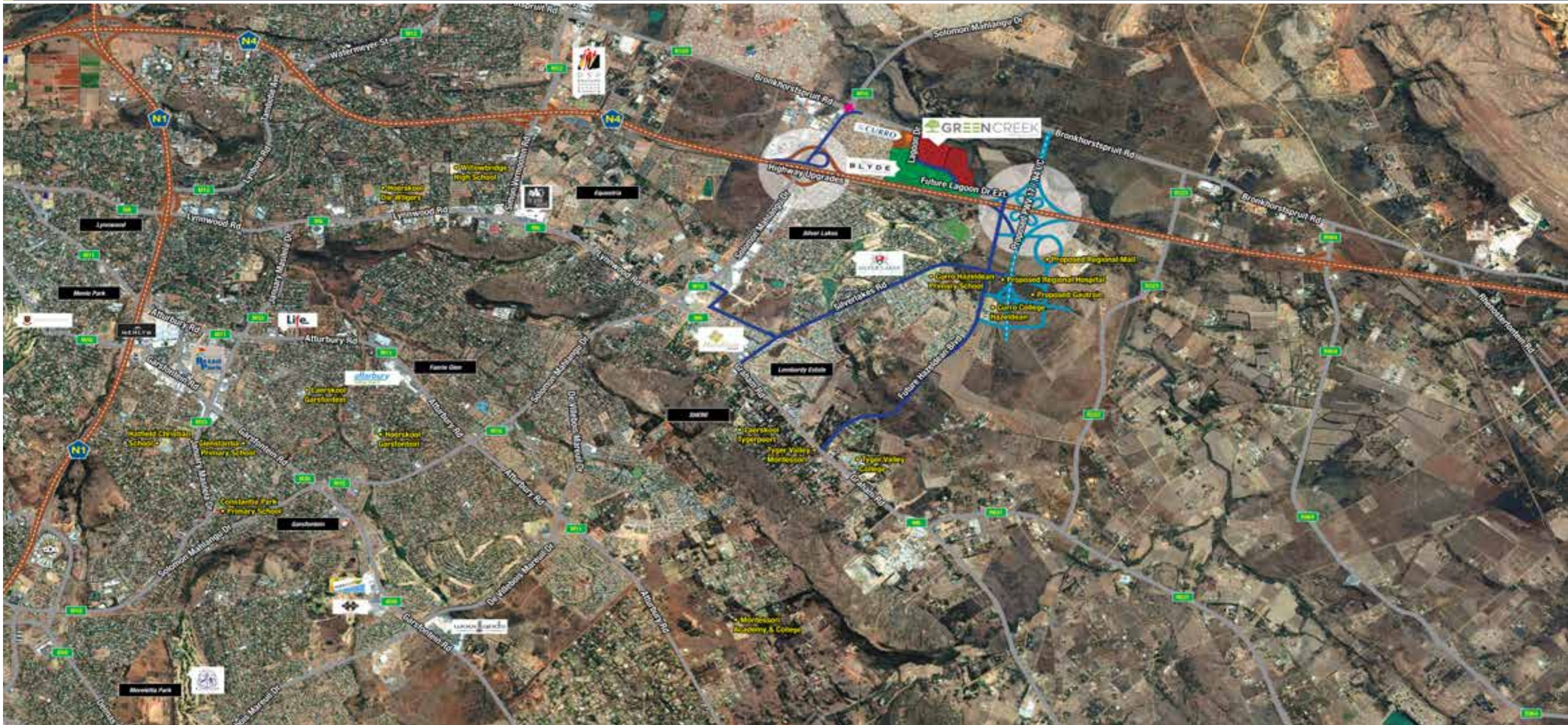
With its prime location, Greencreek is situated perfectly with easy access to the N4, top education facilities and schools minutes away; Curro Hazeldean Primary School, Curro College, Curro Academy, University of Pretoria, various Preschools, Primary and High Schools.

For entertainment outside the development you don't need to look far, top restaurants and fast-food outlets are conveniently close by.

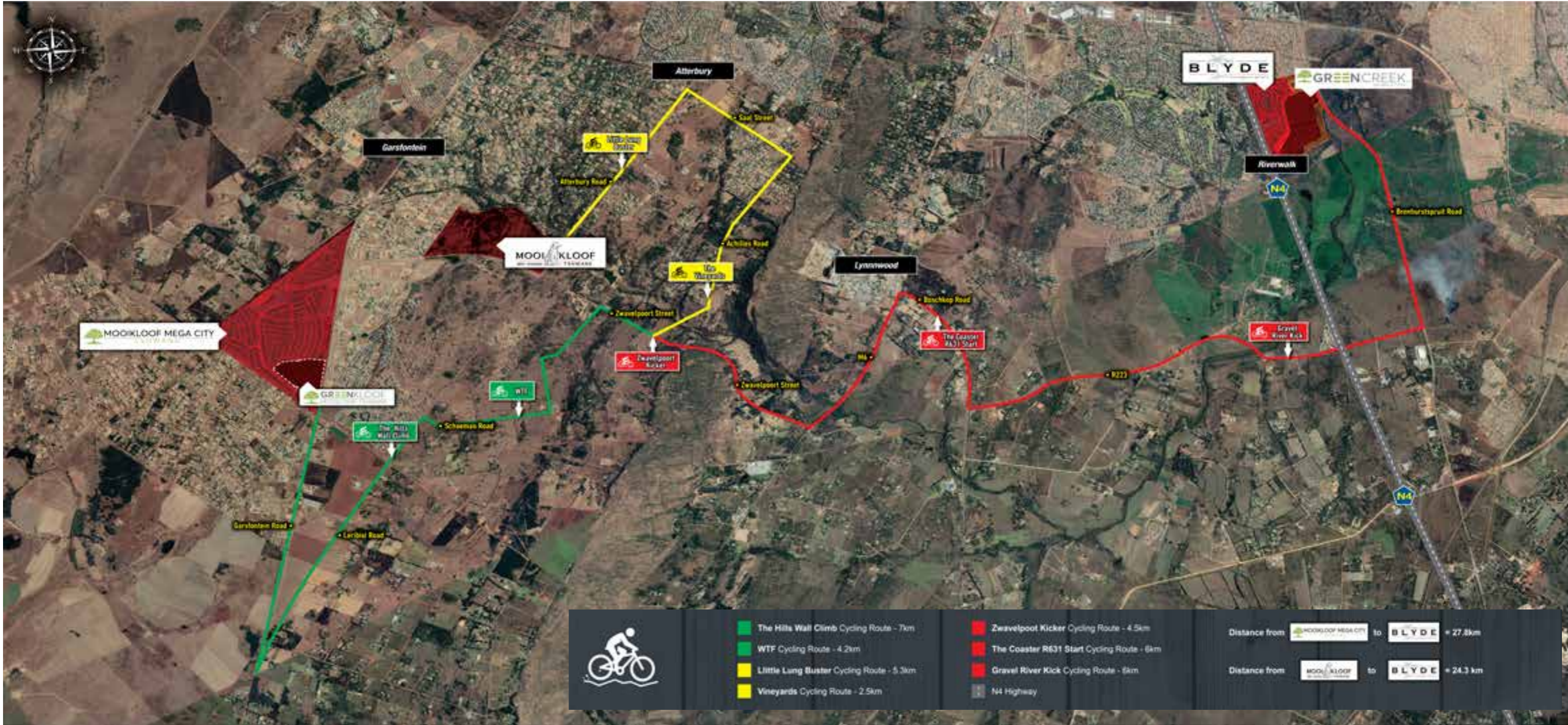
Also minutes away from shopping centres with supermarkets and popular retail stores.



LOCATION MAP



CYCLE MAP



- The Hills Wall Climb Cycling Route - 7km
- WTF Cycling Route - 4.2km
- Little Lung Buster Cycling Route - 5.3km
- Vineyards Cycling Route - 2.5km

- Zwavelpoort Kicker Cycling Route - 4.5km
- The Coaster R631 Start Cycling Route - 6km
- Gravel River Kick Cycling Route - 6km
- N4 N4 Highway

Distance from **MOOKLOOF MEGA CITY** to **BLYDE** = 27.8km

Distance from **MOOKLOOF** to **BLYDE** = 24.3 km

THE GATE HOUSE

With state-of-the-art developments it has to have state-of-the-art security. Greencreek has two secure main entrances with automated boom systems and 24-hour security. The boundary walls have electric fencing.



DEVELOPMENT



The exclusive development offers studios, 1-bedroom, 2-bedroom and 3-bedroom apartments with private gardens for the ground floor apartments and private balconies for first, second and third floor apartments.

Each apartment comes with 2 parking bays for the 2- and 3-bedroom apartments and 1 parking bay for the 1-bedroom apartments and studios. There is visitors parking throughout the development as well as by the Lifestyle Centre. There is also an eco-friendly car wash facility.



DEVELOPMENT



DEVELOPMENT



